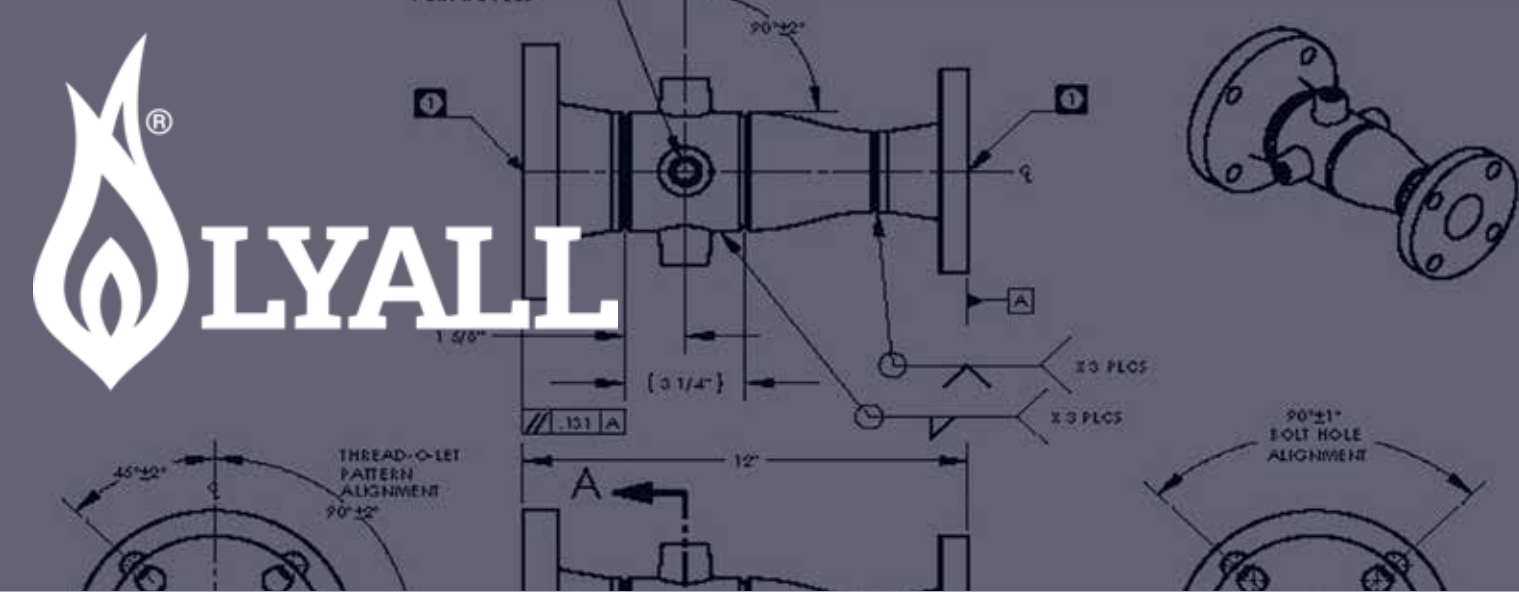




Ø.43/64±1/64"
PORT X 3 PLCS

REV	PC#	DESCRIPTION	DATE	BY
A	064	THREAT ID MODIFIED	3/2/08	CH



COMMERCIAL & INDUSTRIAL ROTARY METER SETS



California Office
2665 Research Dr.
Corona, CA 92882

Customer Service (800) 535-9255

Wisconsin Office
16875 West Ryerson Rd.
New Berlin, WI 53151

RWLyall.com



Lyall provides quality commercial and industrial rotary meter sets backed by more than 40 years of manufacturing experience. Our robust Quality Management System, state-of-the-art facilities and highly skilled work force allow us to offer products that are welded, assembled, tested and painted in house per specification, resulting in overall quality, cost and aesthetics that are very difficult to duplicate in field fabricated products. In addition, the availability of redundant manufacturing capabilities within our two plant locations provides flexibility and security to both ourselves and our customers.

Manufacturing Excellence

ISO-9001

- Lyall continually strives to maintain our reputation of quality leadership within our industry and is highly regarded as an innovator in product design, reliability and safety. To emphasize our commitment to this effort, we maintain ISO-9001 registration in both facilities we operate.

Quality Management System

- The ability to identify what is buried underground has become increasingly important. Lyall has been an industry leader in this initiative on the gas distribution side and offers product tracking and traceability on rotary meter products through documented Material Test Reports (MTR).

Customized Solutions

- The principal philosophy the company was founded on, "Listening for customers' problems and solving them", has been applied through a quality control and lean manufacturing process that is second to none. The result is that we have been able to provide the top utilities in the United States with the most comprehensive solutions approach in the industry. We pride ourselves on our ability to translate our customers' needs into products that increase their quality while reducing their total cost of ownership. These core competencies allow maximum flexibility and provide a tremendous breadth of offerings both standard and fully customized.

Facilities

- 167,000 square foot dedicated manufacturing footprint within two facilities
- 6 overhead cranes with capacity up to 12.5 tons
- 21' x 15' blasting booth
- 40' x 20' paint booth
- 2 in-house quality assurance and testing laboratories
- Indoor truck loading
- 5,000 gallon re-circulatory pump test fluid system



Safety

- New employee safety orientation
- Weekly toolbox safety meetings
- Employee training
 - Work instruction
 - Training operation guidelines
- Mandatory forklift, crane and material handling certification
- Safety audits, safety-related KPIs and offsite safety meetings
- In-house safety teams



Manufacturing Support

- 3D modeling and engineering drawings
- Optimization of manufacturing process and costs through design review
- Quality assurance testing documentation

Material Test Data supplied for components and material (i.e. steel)

Non-destructive weld test results (third party available)

Radiographic (RT)

Ultrasonic (UT)

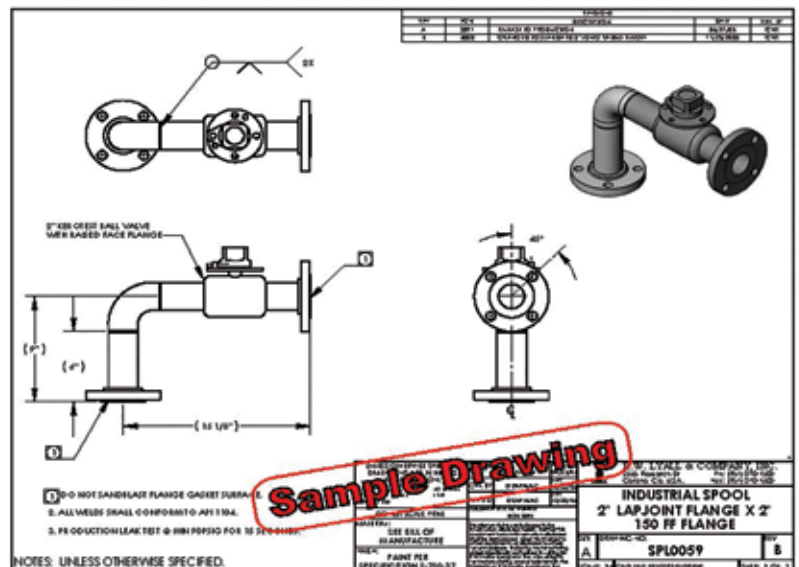
Magnetic Particle (MT)

Dye Penetrant (PT)

Hydrostatic (Glycol/Water) 5,000 PSI max

Pressure (500 PSI max)

- Component selection and sourcing support
- Incoming material inspection
- Supplier qualification and audits
- First article inspection
- In-process audits
- Corrective Action Reports (CAR)



Welding

- 3 certified welding inspectors on staff
- 2 certified welding instructors on staff
- 20+ certified welders on staff
- Material processing capability
 - Carbon steel
 - Stainless steel
 - Aluminum
- Lyall Qualified Weld Procedures per API-1104 standard
 - X-42 GMAW/GTAW weld process, all positions, unlimited OD and W/T
 - X-60 GMAW/GTAW weld process, all positions, unlimited OD and W/T
 - X-65 GMAW/GTAW weld process, all positions, unlimited OD and W/T
 - X-70 GMAW/GTAW weld process, all positions, unlimited OD and W/T
- Lyall Qualified Weld Procedures per ASME Section IX
 - Stainless steel GMAW/GTAW weld process, 1G and 1F positions, 1" - unlimited OD, .56" max W/T
- American Welding Society AWS D1.1
 - Structural steel GMAW/GTAW & FCAW
- Certify to customer qualified weld procedures as required



Coatings

- Two-part epoxy primer
- Two-part urethane top coat (standard 49 Gray, other colors available)
- Hot dip galvanizing
- Zinc plating
- Direct burial epoxy
- Epoxy and polyester powder coating









Ø 43/64 ± 1/64"
PORT X 3 PLCS

REV	REV	REV	REV	REV
A	26-2	311A318 10 PROBE CID-4	3/0 1/2	3/0 1/2

90° ± 2°

1

1

1 5/8"

{ 3 1/4" }

X 3 PLCS

X 3 PLCS

.131 A

12"

A

90° ± 1°
BOLT HOLE
ALIGNMENT

45° ± 2°
90° ± 2°
THREAD-O-LET
PATTERN
ALIGNMENT

COMMERCIAL & INDUSTRIAL ROTARY METER SETS



California Office
2665 Research Dr.
Corona, CA 92882

LIT-ROTARY-0316

Customer Service (800) 535-9255

Wisconsin Office
16875 West Ryerson Rd.
New Berlin, WI 53151