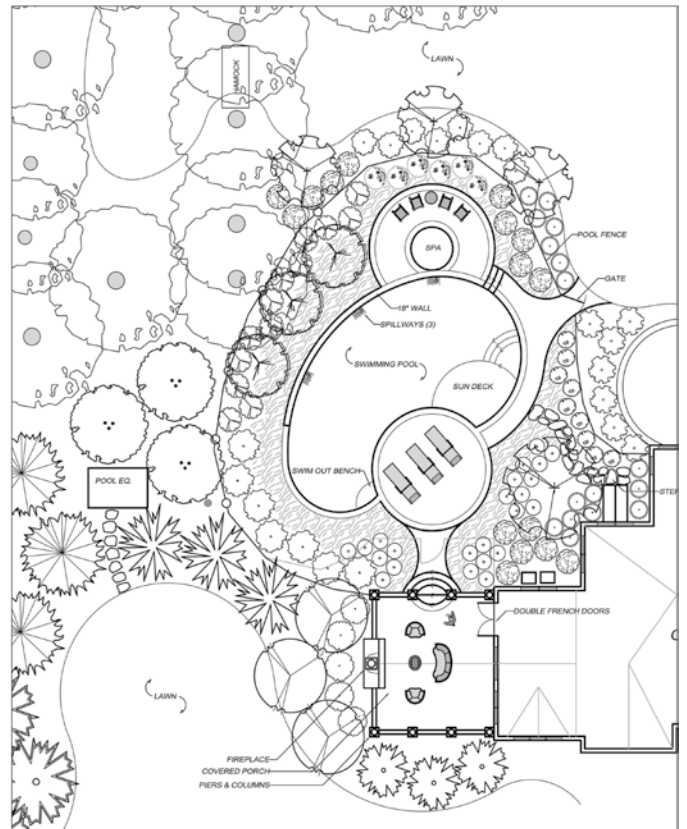


POOL & PATIO PIPING PRODUCTS

It Doesn't Get Any Easier



At Lyall, more than 40 years of gas piping systems experience is applied to make your pool and spa gas heater installations as easy as possible. All Lyall products, like our pre-bent risers and LYCOFIT® mechanical fittings are designed for easy installation saving you time and money in the field. Innovative designs along with the most durable and corrosion-resistant factory coatings in the industry mean long-lasting products that keep systems up and running. When it comes to getting the job done right the first time, and as quickly as possible, there is no better choice than Lyall's wide range of safe and long-lasting products for pool/spa gas heater installations. Whether your products are large or small, gas or propane, we've got you covered.



THERE'S NO BETTER FIT

THAN LYCOFIT®



Coupling



3-Way Tee



PE-Copper Tubing
Adapter



90° Elbow



End Cap

Product Features & Benefits:

- 100% leak-proof, easy to install
- Proven reliability - millions in use
- No measuring or calculating required
- Cost-effective and maintenance-free
- Sizes for all needs - CTS and IPS for common residential and commercial natural gas and propane heaters, lighting, bbq grills and other backyard appliances
- Recognized quality - all products are 100% factory tested and meet or exceed all ASTM, DOT, ANSI, ASME specifications as well as being listed under IAPMO/UPC, NFPA and CSA

Contact Info

California Office

2665 Research Dr.
Corona, CA 92882

Wisconsin Office

16875 West Ryerson Rd.
New Berlin, WI 53151

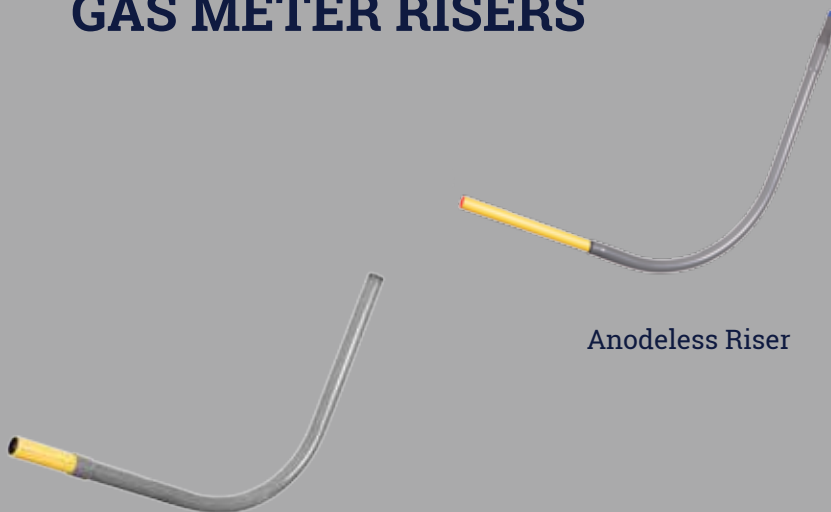
Customer Service

(800) 535-9255
Sales@RWLyall.com

LIT-PSDS-2A

RWLyall.com

GAS METER RISERS



Transition Anode Riser

Anodeless Riser

Product Features & Benefits:

- Safe and dependable transition from below-ground PE gas pipe to above-ground gas appliances
- Patented steel barbed spigot provides a permanent gas seal
- Corrosion-resistant epoxy coating on the steel casing
- Available in common sizes: 1/2 through 2 IPS
- Smaller sizes available for gas bbq grills, lights, torches, fire pits and other yard features
- Meets DOT 192.281, 192.283, 192.375 and ASTM-D2513 CAT-1 specifications
- Listed with IAPMO/UPC and CSA