

PIG LAUNCHERS & RECEIVERS

Industry-leading quality. Unparalleled performance. That's the Lyall promise.

The product you receive is the product you expect. On time. Every time.

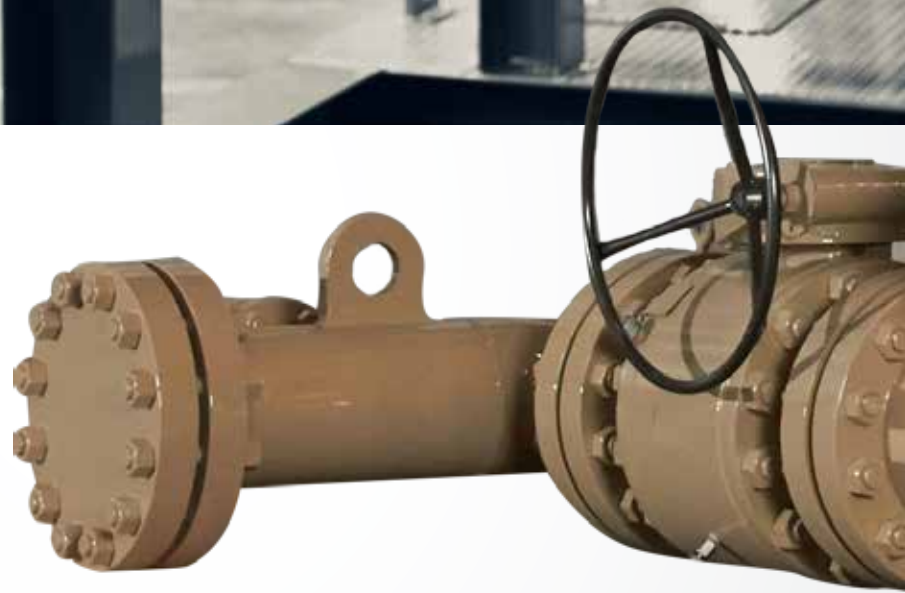
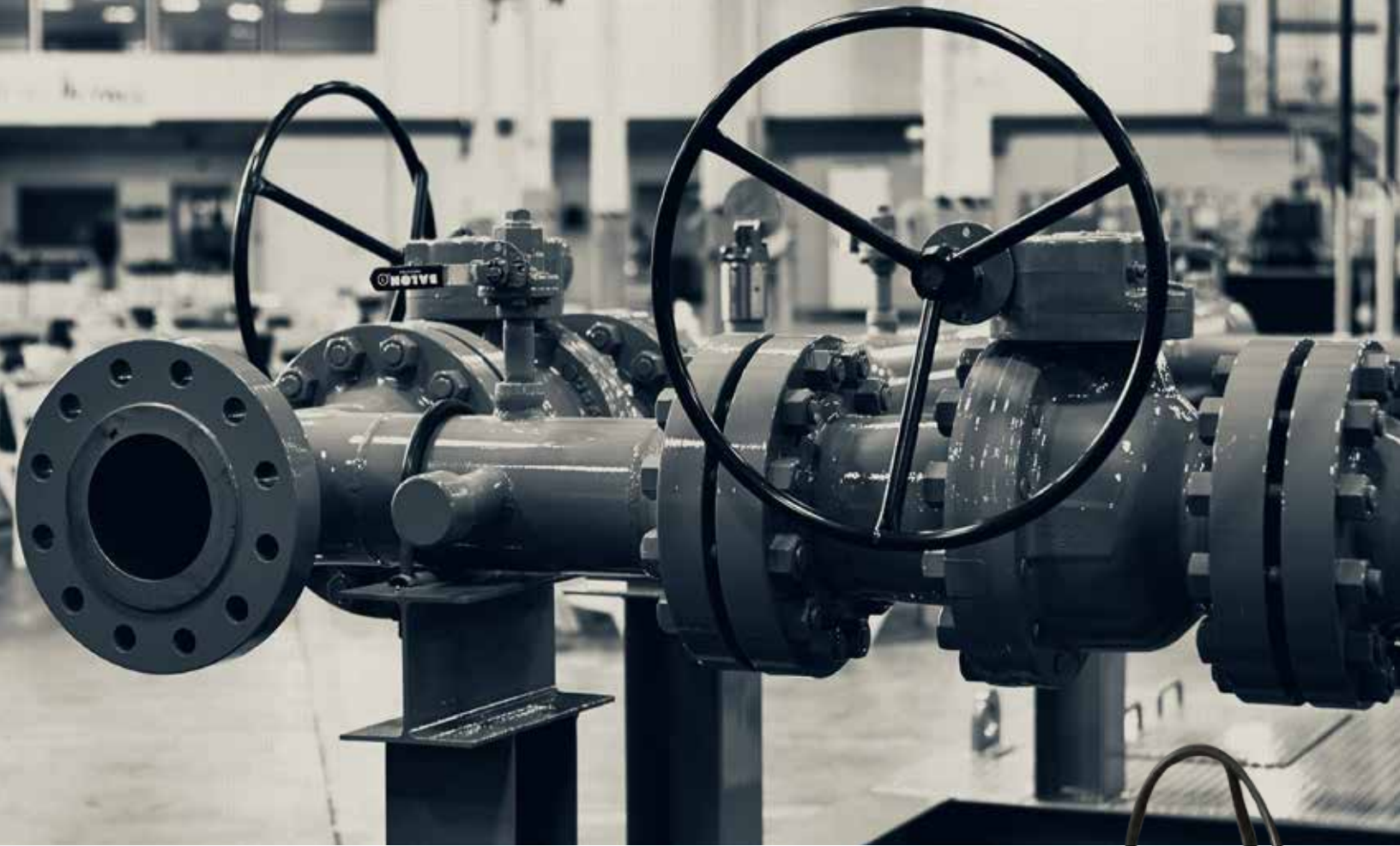
Lyall pig launchers and receivers, designed primarily for gas gathering, transmission pipelines and distribution mains, are fabricated under stringent quality control guidelines by a team of highly skilled technicians. Our New Berlin, Wisconsin manufacturing facility is equipped with the latest in fabrication technology to construct launchers and receivers from 4" to 24".

Lyall's in-house design and engineering teams work tirelessly to develop the products that meet your specifications and requirements. Fully customizable from start to finish, Lyall's large fabrication products are the best choice for the oil & gas midstream and transmission industry.

From simple barrel launchers and receivers to complete skid-mounted units with associated equipment, such as actuated valves, quick-opening closures, instrumentation, signalers and control systems, Lyall has the space, the tools and the skills needed for virtually any project.

Product Benefits:

- Traditional horizontal launchers and receivers available in sizes 4" to 24" with structural skids produced by API-1104 certified welders
- Products built and painted in a controlled environment
- Standard materials include seamless API-5L X-42 pipe, unless otherwise specified by customer
- Class 600 flanges
- T.D. Williamson closures/signalers unless otherwise specified by customer
- Balon® valves, unless otherwise specified by customer
- Tested to meet DOT 49CFR192 regulations or to meet customer specifications
- Material Test Reports (MTR) and Material Certificate Reports (MCR) included



Contact Info

California Office

2665 Research Dr.
Corona, CA 92882

Wisconsin Office

16875 West Ryerson Rd.
New Berlin, WI 53151

Customer Service

(800) 535-9255
Sales@RWLyall.com

LIT-PIGDS

RWLyall.com

Additional Large Fabrication Capabilities:

- Patent Pending Vertical Pig Launchers & Receivers
- Security Vaults
- Pressure Regulator Stations (above ground and vaulted below ground)
- Industrial Meter Sets and Spools
- Town Border/Gate Stations
- Pipeline Farm Taps
- LACT Units

